

Lyon REC News



October 2011

Phone : 712-472-2506 or 1-800-658-3976 ~ Website : www.lyonrec.coop
Office Hours : Monday thru Friday 7:30 a.m. to 4:30 p.m.



*Give thanks
for rural
electric pioneers*

They did their work nearly 80 years ago, and most of them have passed away by now. But the legacy of the men and women who petitioned and paid for and built the electric cooperative that serves your neighborhood lives on every time you turn on the lights, watch TV or charge your cell phone.

This holiday season, give thanks for the pioneers who helped bring electricity to the rural communities and farms that the big electricity companies refused to serve. Perhaps your grandparents or your neighbors' relatives were involved in collecting membership fees or signatures. Maybe you've heard their stories.

Thanksgiving is an appropriate time to recall their sacrifices, their pre-electricity lifestyle and their foresight, which laid the foundation for the at-your-fingertips electric, phone and Internet service that you enjoy today.

When you take your turkey out of your electric oven this season, or when you switch on your electric furnace or heat pump for the first time this fall, remember those who lived without the convenience of electricity—and that they wanted it so badly they literally took matters into their own hands.

Remember
SAFETY FIRST
this harvest season



October is Cooperative Month

When the economy is uncertain and the country's leaders can't seem to agree what to do about it, it's good to know that your neighbors have your back.

One of those good neighbors is your electric cooperative.

Your electric utility is locally owned. In fact, you and your neighbors own it.

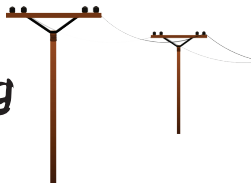
That's the nature of the cooperative way of doing business. A cooperative is owned by the people who use its services. That's why your cooperative refers to you as a consumer-member instead of as a customer.

As a member-owner, you have a say in how your electric cooperative operates. You may attend the cooperative's annual membership meeting, vote for which of your neighbors may sit on its board of directors, or even run for a seat on the board yourself.

Electric cooperatives do not sell stock on Wall Street or rely on investors to stay in business. It's a community business—and it always has been.

Our Powerful Tip

Farmers urged to look up during harvest season



Every year, an average 62 farm workers are electrocuted in the United States and many more are injured, according to Labor Department statistics. The Iowa Association of Electric Cooperatives urges farm operators, family members, and employees to beware of overhead power lines, to keep farm equipment safely away and to know what to do if accidental contact is made with power lines.

It's vital to keep equipment safely away from them, a minimum 10 foot safety radius around the electric line. Farm operators, family members, and farm employees are urged to take these measures:

- Use a spotter when moving tall loads near lines.
- Inspect farm equipment for transport height and determine clearance with any power lines under which the equipment must pass.
- Make sure everyone knows what to do if accidental contact is made with power lines.
- Call your electricity provider to fix sagging lines or damaged guy wires.

It's almost always best to stay in the cab, call for help and wait until the electric utility arrives to cut off the power. If the power line is energized and you step outside, your body becomes the path and electrocution is the result. Stay inside the vehicle unless there's fire or imminent risk of fire. In that case, the proper action is to jump – not step – with both feet hitting the ground at the same time. Jump clear, without touching the vehicle and ground at the same time and continue to shuffle or hop to safety keeping both feet together as you leave the area.

Visit www.SafeElectricity.org and watch the video story of farmer Jim Flach, who was fatally injured as he climbed down from his equipment that was in contact with overhead power lines.

Visit Living with Energy in Iowa, a magazine for members of Touchstone Energy Cooperatives, has additional information for fall harvest safety, www.livingwithenergyiowa.com/.



Beat the cold: Caulk before Thanksgiving

If your house is drafty or if your heating bill seems too high, it could be that the warm, conditioned indoor air is leaking out of the house—or the cold outdoor weather is finding its way in.

Caulking obvious holes and cracks is a good place to start saving money and energy as the weather cools off.

Go outside and take a slow walk around your house. Look for any penetration where something from the outside goes inside, like cables for TV and Internet or phone lines.

You might also find holes in exterior walls for plumbing pipes, outdoor spigots, sump pumps and dryer vents. Caulk around those openings so the hole is just big enough to let the line through with no “breathing room” around it.

A side benefit: Mice, snakes and other critters won't have such an easy time squeezing into your house when they're looking for shelter from the cold.

Have heating inspection before Halloween



The best time to have your heat inspected is after the warm summer air is long gone but before the winter chill sets in.

It's important to have your heating system inspected every year before heating season kicks in. A licensed service technician can warn you about problems—and fix them—before they become so big that your system shuts down during the dead of winter, leaving your house uncomfortably cold for a day or more while you wait for repairs.

Of course, if you put off your inspection until November or later, you can still get one any time. The important thing is to have a pair of professional eyes on your system at least once a year.

Call before you dig!



1.800.292.8989

AUGUST 2011 OUTAGE REPORT

Substation	#Meters	Cause	Date	Duration
1 Lester	23	Animal	08/02/11	1 Hr. 4 Mins.
2 George	14	Equip.	08/06/11	2 Hrs. 10 Mins.
3 George	14	Animal	08/06/11	35 Mins.
4 Rock Rapids	10	Fault	08/07/11	1 Hr. 8 Mins.
5 George	6	Other	08/07/11	41 Mins.
6 George	4	Animal	08/14/11	40 Mins.
7 Rock Rapids	8	Fault	08/17/11	42 Mins.
8 Lester	23	Other	08/18/11	3 Hrs. 41 Mins.
9 George	8	Animal	08/19/11	29 Mins.
10 George	8	Animal	08/19/11	50 Mins.
11 George	5	Storm	08/23/11	3 Hrs.
12 Little Rock	9	Storm	08/23/11	1 Hr. 25 Mins.
13 George	7	Storm	08/23/11	1 Hr. 55 Mins.
14 George	6	Storm	08/23/11	1 Hr. 20 Mins.
15 George	7	Storm	08/23/11	38 Mins.
16 George	2	Trees	08/24/11	40 Mins.
17 Rock Rapids	25	Fault	08/29/11	1 Hr. 10 Mins.

Automatic Payment

Automatic withdrawal for payment of your electric bill is available.

Contact Lyon REC for details or go to our website for the form.

###?###?###?###?###? What's Your Number?

For those members that have cell phones, Lyon Rural Electric Cooperative would like to have that number for contacting members for planned outages, address questions or any other reason for personal contact.

Please write that number on your stub with your payment.

###?###?###?###?###?###?

AUGUST OPERATING STATISTICS

	<u>2010</u>	<u>2011</u>
KWH Purchased	8,091,930	8,710,821
KWH Sold	7,883,292	8,581,239
Percentage of Line Loss (Year to Date)	3.18%	3.30%
Total Demand	15,129 KW	17,825 KW
Average Farm Consumption	2,509 KWH	2,254 KWH
Average Farm Bill	\$210.84	\$201.34
Income Per Mile	\$709.91	\$791.75
Expenses Per Mile	\$629.08	\$771.04
Miles Energized	872.86	872.86
Cost of Wholesale (For the Month)...	4.63¢	5.17¢

Consumer Authorization Form

Yes, I want to be a part of members helping members and contribute to RECare.

_____ I will make a one-time contribution to RECare. My Check is enclosed.

Name _____

Address _____

City _____ State _____ Zip _____

Please mail to:

RECare
Lyon Rural Electric Cooperative
P.O. Box 629
Rock Rapids, IA 51246

RECare Consumer Contribution Plan

Your Rural Electric Cooperative has always extended a helping hand to those needing it. Now, in response to actions by the Iowa General Assembly, your REC has established RECare, a program of members helping members. RECare will provide funds to be distributed by local community action agencies to help pay winter heating bills and assist in weatherization of homes of low income consumers of this Cooperative. You may make a one-time contribution, or you may make a monthly contribution. Even one dollar a month contribution will help others.

Prices Effective January 1, 2011

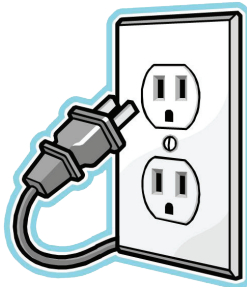
	PRICE	TAX	TOTAL	REBATE	FINAL
MARATHON WATER HEATER					
50 Gallon	\$680.00	\$47.60	\$727.60	\$ 0	\$727.60
85 Gallon	\$850.00	\$59.50	\$909.50	\$200.00	\$709.50
105 Gallon	\$940.00	\$65.80	\$1005.80	\$200.00	\$805.80
NEW CONSTRUCTION/GAS REPLACEMENT MUST BE APPROVED FIRST - Residential year round homes only - requires load control device installed					
50 Gallon Marathon	\$680.00	\$47.60	\$727.60		\$727.60
85 Gallon Marathon	\$0.00	\$0.00	\$0.00		\$0.00
105 Gallon Marathon	\$90.00	\$6.30	\$96.30		\$96.30
GAS REPLACEMENT					
50 Gallon Marathon	\$680.00	\$47.60	\$727.60		\$727.60
85 Gallon Marathon	\$0.00	\$0.00	\$0.00		\$0.00
105 Gallon Marathon	\$90.00	\$6.30	\$96.30		\$96.30

Marathon
www.marathonheaters.com
1-800-321-6718



To get the rebate, you must agree to have load control installed, and allows for you to receive \$3.00 monthly credit on your electric bill.

Turning off isn't enough: Unplug



If you leave your desktop computer plugged in when you're not using it, you'll pay around \$5.40 a month for the power it uses. Your printer costs you about the same—even when it's turned off. Your big-screen TV and microwave oven run \$2 and some change when they're plugged in but turned off. And phone chargers, cable TV converter boxes, modems and even power tools run up a tab if you leave them plugged in when they're not in use.

The electricity they use is called "phantom power," and it can add up to hundreds of dollars a year.

The reason: Any device with a timer or memory chip stays "live" when you turn it off so everything remains programmed correctly. Digital cameras, coffee makers, wireless phones—all use phantom power unless you unplug them when you're finished using them.

So if you don't need to leave an electrical device plugged in while you're not using it, unplug it and save yourself some money.

HAVE A SAFE AND
HAPPY HALLOWEEN



Listen to the
Doug Rye Radio Show
KIWA Radio
Sheldon - 1550 AM
Saturdays, 9:00 A.M.



Doug Rye is a leading consultant in all aspects of energy efficiency including: home insulation practices, energy efficient heating and air, water heaters, caulking, air infiltration and attic insulation.